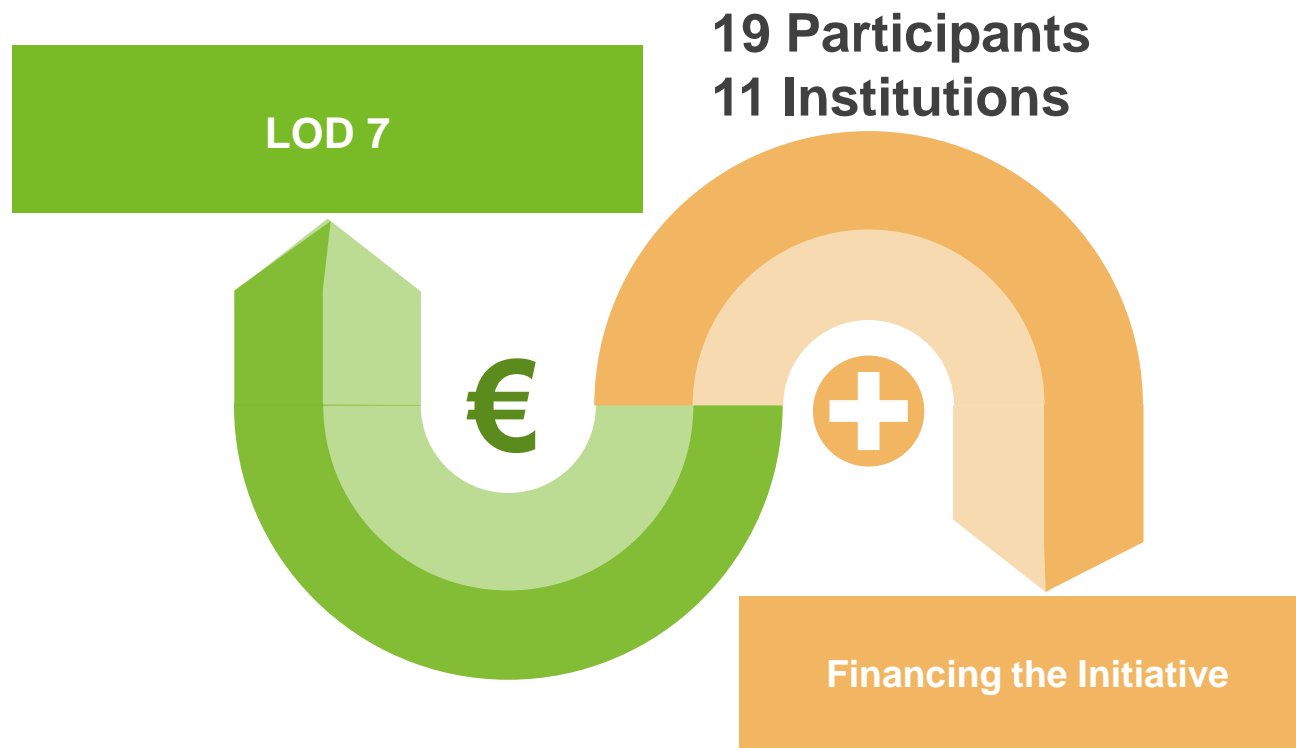


54 IG Meeting – Larnaca, Cyprus





F inancing Activities

HOW
is
Your
Institution
Organized

The purpose of this presentation is to propose a set of questions that allow us to understand how the institutions that compose the Implementation Group are organized, in order to seek good operating practices that can be adopted.

The intention is to create a questionnaire, to be disseminated by all Institutions, to get to know and share good working methods and good financial solutions.



Approach

01 Participation

Participation of your Institution in International Activities.

02 Organization

How are organized the International Activities in your Institution?

03 Sources of Financing

Sources of Funding for Participation in International Activities.

04 Final Document

Creation of a document to be disseminated by all IG members.

LOD 7

What Funding Source did you use to participate in the 54th IG Meeting?

A – ERASMUS 10

B – Military Institution 9

C – Own Source

D – Other Source

If your answer is D, can you, please, define:

LOD 7

Is the aforementioned Funding Source the one that your institution normally uses to participate in international activities?
If not, Which are the Financing Sources usually used by your Institution?

A – ERASMUS

B – Military Institution

C – Own Source

D – Other Source

If your answer is D, please define:

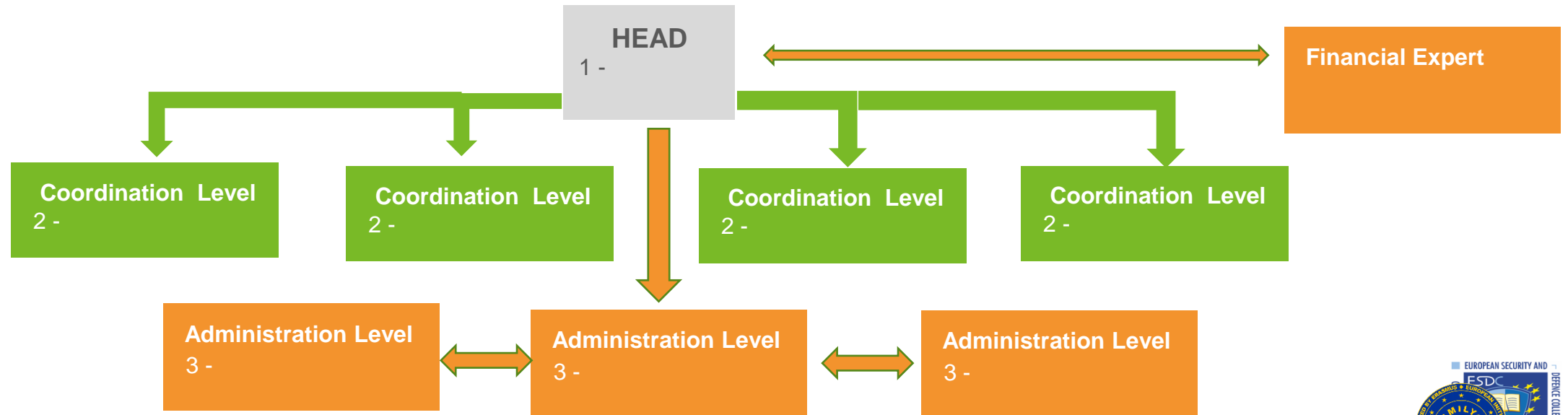
LOD 7

Does your institution have an International Relations Office organized within its structure?

3 Yes

8 No

If your answer is YES, how many persons work in the International Relations Office?



LOD 7

Can your Institution accommodate International Students?

11 Yes

No

Can your institution accommodate International Staff?

6 Yes

5 No

Does your institution have any agreement with tourist entities to support visits or tourist/cultural itineraries??

5 Yes

6 No

If your answer is YES, can you please describe?

Contact with touristic entities by email

Touristic guides in the monuments for free

LOD 7

How many Students your Institution send in ERASMUS/Academic Year?

none

» 0 and « 10

» 10 and « 20

» 20

Specify

How many Staff Member your Institution send in ERASMUS/Academic Year?

none

» 0 and « 10

» 10 and « 20

» 20

Specify

From the mobilities of Staff, how many are Teachers?

none

» 0 and « 10

» 10 and « 20

» 20

Specify

And How many make the mobility for Teaching?

none

» 0 and « 10

» 10 and « 20

» 20

Specify

LOD 7

Total Students your Institution send for International Activities/Academic Year?

none

» 0 and « 10

» 10 and « 20

» 20

Specify

Total Teachers/Staff your Institution send for International Activities/Academic Year?

none

» 0 and « 10

» 10 and « 20

» 20

Specify

THANK YOU 😊

paulo.machado@academiamilitar.pt

